

ATLANTIC LITTLE CHICAGO N-32
Undefined
UNKNOWN
00N326720130000

File location: K:\Kodiak\LAS\Little Chicago\Synthetics\00-N32-67-20-130-00-0.syn
KB elevation: 292.32 ft amsl
Depth range (KB) 34.0 to 6415.0 ft
Depth range (SS) 258.32 to -6122.68 ft
Time range: 0.0 to 0.7097 secs
Sample rate: 0.5 ms

Model 26532
Type: Zero offset (P-P)
Attribute: Amplitude
RC dependency: P Son.
Filter: 10/17-70/90 0 Phase
Amp: 1.5 Tr/in: 12.0

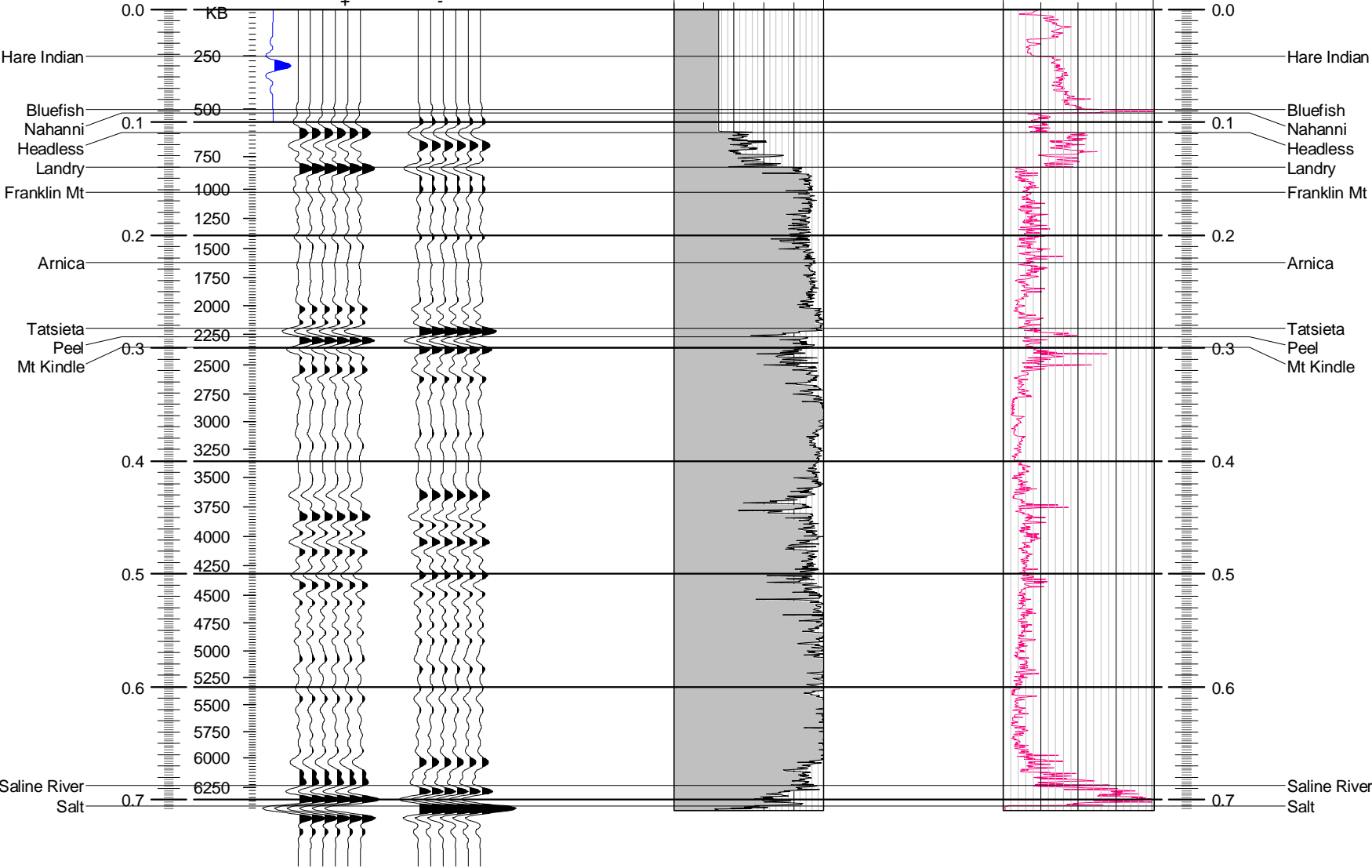
2 SONIC INTERVAL TRANSIT TIME (NON-COMPENSATED) 3 SONIC GAMMA RAY

*Active

*Active

6000.0 21000.0 0.0 150.0

ft/sec api



00N326720130000

Tops	Depth KB ft	Depth SS ft	Time 2 way sec	Vav. ft/sec	Vint. ft/sec	Isochron sec	Isopach ft
Kelly bushing = 292.32 above msl, Top of log data = 34.0 KB, Bottom of log data = 6415.0 KB. (ft)							
Tops lists: Generic tops							
Hare Indian	253.00	39.32	0.04175	10492.2	10516.1	0.04698	247.00
Bluefish	500.00	-207.68	0.08872	10504.9	10516.1	0.00323	17.00
Nahanni	517.00	-224.68	0.09195	10505.3	10603.5	0.01735	92.00
Headless	609.00	-316.68	0.10931	10520.8	13425.1	0.03084	207.00
Landry	816.00	-523.68	0.14014	11159.9	19036.1	0.02154	205.00
Franklin Mt	1021.00	-728.68	0.16168	12209.1	19113.4	0.06268	599.00
Arnica	1620.00	-1327.68	0.22436	14137.9	19904.4	0.05848	582.00
Tatsieta	2202.00	-1909.68	0.28284	15330.2	18251.7	0.00701	64.00
Peel	2266.00	-1973.68	0.28985	15400.9	18836.9	0.00956	90.00
Mt Kindle	2356.00	-2063.68	0.29941	15510.5	19989.3	0.38801	3878.00
Saline River	6234.00	-5941.68	0.68742	18038.6	17014.8	0.01834	156.00
Salt	6390.00	-6097.68	0.70575	18012.0	---	---	---
Proterzoic	6807.00	-6514.68	---	---	---	---	---